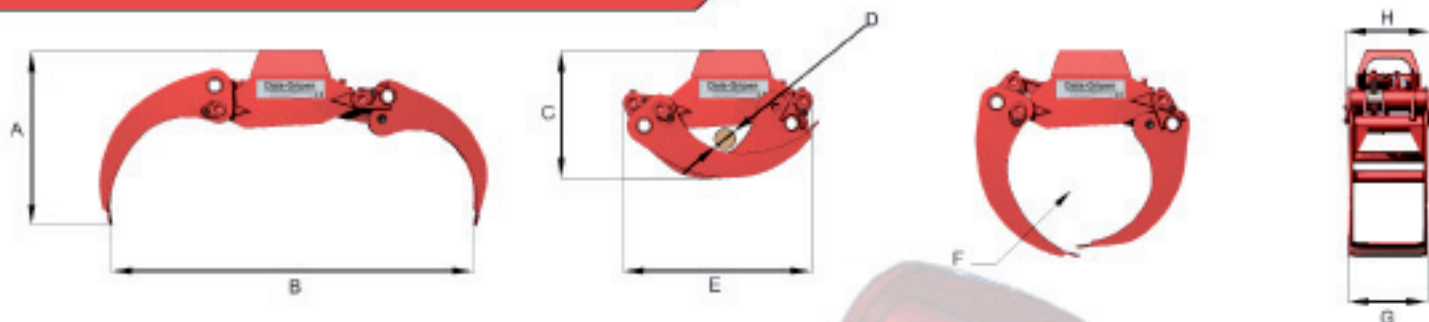


# Dala-Gripen



MODEL			DG8	DG12	DG20-1	DG20-2	DG25	DG26	DG28	DG35	DG42
A	Height when open	mm	405	503	595	550	615	655	735	700	835
B	Max opening	mm	865	1080	1180	1250	1400	1350	1435	1820	2000
C	Height closed	mm	325	355	415	415	475	500	520	600	610
D	Min gripping diameter	mm	60	50	65	73	90	100	105	125	125
E	Length when closed	mm	450	615	700	645	730	800	810	930	1045
F	Gripping area	m <sup>2</sup>	0,08	0,12	0,2	0,2	0,25	0,26	0,28	0,35	0,42
G	Width	mm	220	200	323	280	375	353	420	485	490
H	Max width	mm	220	270	405	295	390	440	430	495	500
Weight		kg	25	46	85	68	125	122	170	250	285
Max load		kg	350	550	1000	2000	3500	1500	3500	5000	5000
Max working pressure		Bar	180	250	250	250	250	250	250	250	250
Cylinder force		kN	35,3	35,3	88,5	71,6	115,5	115,5	115,5	146,2	180,5
Gripping force arms tip		kN	6,3	8,9	20,1	12,1	19,3	27,3	19,2	25,4	32,8
Opening time 70l/min		s	0,14	0,19	0,44	0,28	0,62	0,6	0,5	0,8	1,3
Closing time 70l/min		s	0,2	0,3	0,66	0,46	0,83	0,98	0,9	1,3	1,8
Order code			DG8	DG12	DG20-1	DG20-2	DG25	DG26	DG28	DG35	DG42



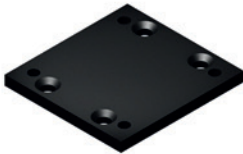
Sit Right AB  
 Adress: Närsjövägen 36,  
 SE-780 53 NÅS, Sweden  
 e-post: mail@sit-right.se  
 Telefon: 0281-300 30  
 www.sit-right.se

**sitRIGHT**

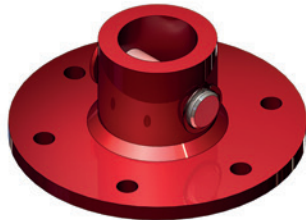
# Dala-Gripen

## Adapters

ROTATOR ADAPTERS



ROTATOR ADAPTERS



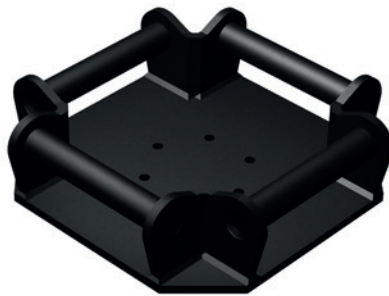
S BRACKETS



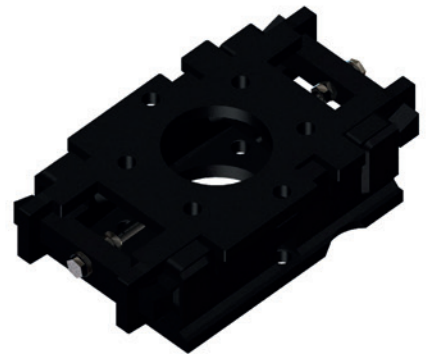
S ADAPTERS



SX ADAPTERS



QUICK CONNECTOR



Sit Right AB  
Adress: Närsjövägen 36,  
SE-780 53 NÅS, Sweden  
e-post: [mail@sit-right.se](mailto:mail@sit-right.se)  
Telefon: 0281-300 30  
[www.sit-right.se](http://www.sit-right.se)

**sit**RIGHT